

Model XXT42.5RZ

Truck Mounted 42-Meter Concrete Boom Pump



- **137'10" ft (42 m) Vertical Reach**
- **200 yd³/hr (154 m³/hr)**
- **1300 psi Concrete Pressure**
- **5-Section RZ-Fold Boom with 5" (125 mm) Line**
- **Exclusive, Versatile, "DRAGONFLY" XX Outrigger Design**
- **Efficient, "POWER-FLO" Rexroth A4V125, Closed-loop, Over-center Hydraulics**
- **Exclusively 90° Elbows on Boom**
- **Radiused Boom Design**

Boom: Versatile, compact, fully articulating 5-section RZ-fold boom represents the latest in boom technology. Radiused boom design to improve durability and eliminate stress focal points. Low unfolding height of 28' (8.53 m).

Delivery Line: 5" (125 mm) delivery line with straight pipe sections and 90° elbows. Components are all readily available and bracket mounted for easy delivery line replacement.

Pedestal: Integrated outrigger and boom pedestal with small outrigger footprint. "XX"-structure design eliminates stress or twist in truck frame. Heavy-duty, low friction, double-row ball bearing rotates the 4-section boom assembly through a 364° slewing range. Hydraulic oil tanks and water tank located in pedestal section for improved weight distribution. Two spacious 14'8" (4.5 m) long decks for convenient storage of pipes and hoses.

Outriggers: REED's exclusive (patent pending) "DRAGONFLY" XX design sets new standards in maximum versatility and speed. Fully hydraulic operation. This innovative design allows operation in job site conditions where others can not open up.

Remote Controls: Lightweight fully proportional remote control box with 100 ft (31 m) cable for smooth operation of all boom and pump functions. Fully proportional radio remote controls included as well. Remote and radio controls have identical patterns. Manual boom controls are conveniently located on the RH deck.

Clean-out: Hydraulically driven, high pressure 360 psi (25 bar) water pump with 295 gal (1120 L) water tank and hose.

Concrete Pump: Efficient, closed-loop hydraulic system using dual

Rexroth A4V125 hydraulic pumps for smooth, controllable pumping. Reduced boom bounce even when pumping at maximum output. Hard-chromed concrete cylinders and hard-faced wear parts precision machined for long life and tight sealing. Fully-variable volume control from 0 to 200 yd³/hr (0 to 154 m³/hr). Hinged clean-out door and swing away discharge pipe for quick, effective wash-out. All major system components located for good operator accessibility and ease of service. Harsh-mix hopper combines field proven boom pump experience with the most advanced technology available. Hopper screen and splash guards are standard.

REED Solid State Black Box: Reliable technology for smooth, fast cycling. This eliminates the heat-generation problem of hydraulic cycling and the eventual failure of old-style conventional relays.

Model XXT42.4RZ

Truck Mounted 42-Meter Concrete Boom Pump

BOOM SPECIFICATIONS

XXT42.4RZ

Height & Reach		
Vertical Reach	136'5"	41.58 m
Horizontal Reach	123'4"	37.60 m
Reach From Front of Truck	112'7"	34.32 m
Unfolding Height	28"	8.53 m

5-Section Boom		
1st Section Articulation	96°	96°
2nd Section Articulation	180°	180°
3rd Section Articulation	270°	270°
4th Section Articulation	180°	180°
5th Section Articulation	270°	270°
1st Section Length	29'	8.84 m
2nd Section Length	25'	7.62 m
3rd Section Length	23'7"	7.2 m
4th Section Length	22'11"	6.99 m
5th Section Length	22'11"	6.99 m

General Specs		
Pipeline Size (ID) Metric Ends	5.0"	125 mm
With Couplings	5.5"	140 mm
Rotation	370°	370°
End Hose: Length (Heavy-duty)	13'0"	4.00 m
Diameter	5.0"	125 mm
Outrigger Spread L-R-Front	27'8"	8.43 m
Outrigger Spread L-R-Rear	26'2"	7.98 m

PUMP SPECIFICATIONS

Output:	Rod Side	200 yd ³ /hr	154 m ³ /hr
	Piston Side	131 yd ³ /hr	101 m ³ /hr
Pressure:	Rod Side	1300 psi	90 bar
	Piston Side	1853 psi	128 bar
Hard-chromed Concrete Cylinders		Standard	Standard
Concrete Cylinder Diameter		9.0"	230 mm
Stroke Length		79.0"	2000 mm
Maximum Strokes per Minute:	Rod Side	31	31
	Piston Side	18	18
Hopper Capacity		23 ft ³	650 L
Volume Control		Zero to Full	Zero to Full
Hopper Grate Vibrator		Standard	Standard
Hydraulic System: RR A4V125		Closed-loop	Closed-loop
Hydraulic System Pressure		5000 psi	345 bar
Hydraulic Tank(s) Capacity	Pump	118 gal	450 L
	Boom	106 gal	400L
Hydraulic Drive Cylinders:	Rod Diameter	3.15"	80 mm
	Piston Diameter	5.51"	140 mm
Water Tank Capacity		295 gal	1120 L
Maximum Aggregate Size		2.5"	63 mm

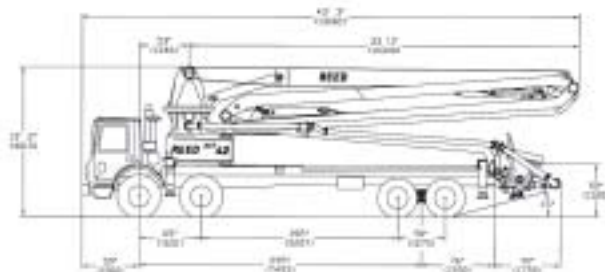
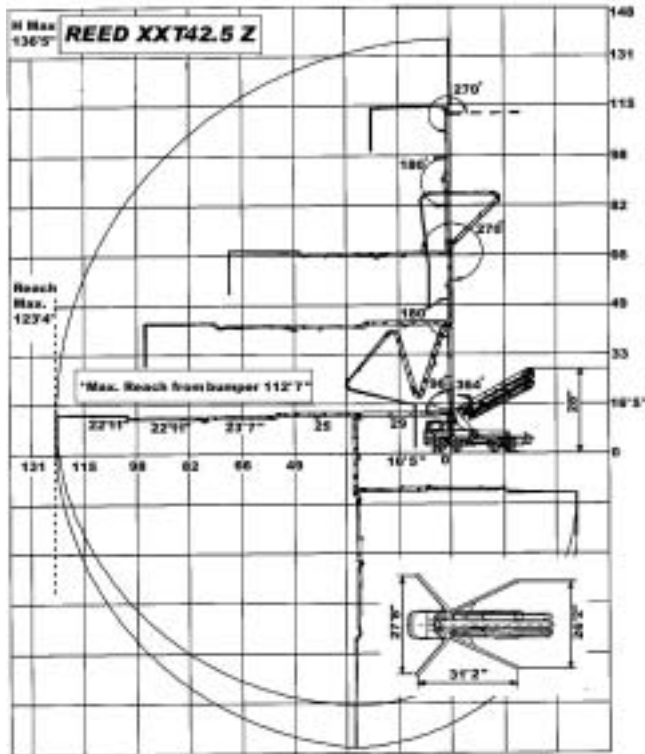
TRUCK MOUNTED SPECIFICATIONS*

Truck Model: Mack MR 688S

Horsepower	460	460
Length	43'3"	13.18 m
Width	8'2"	2.49 m
Height	13'2"	4.01 m
Wheelbase	295"	7.99 m
Front Axle Weight (Approx.)	35,860 lbs	16,266 kg
Rear Axle Weight (Approx.)	42,400 lbs	19,233 kg
Total Weight (Approx.)	78,260 lbs	35,499 kg

Maximum theoretical performance shown above. Maximum output and pressure cannot be reached simultaneously. Performance will vary depending on slump, mix design and pipeline diameter. Specifications subject to change without prior notice.

*Dimensions vary with different truck makes, models and specifications.



Distributed By:

REED • A Member of the Shea Family of Companies
 13822 Oaks Avenue • Chino, California 91710 USA • 909-287-2100
 Fax: 909-287-2140 • Toll-free: 888-779-7333 • www.reedpumps.com